



Woodnesborough Lane, Eastry, Sandwich

Guide Price £600,000 Freehold

3 bedroom detached house for sale

Description

"Siri Nivasa" is a unique detached house which was designed by a Canadian Architect and was built in the 1950's. The property occupies a huge plot in the village of Eastry, and has so much potential to offer to a new buyer. There are gardens surrounding this great family home to three sides, there is an eclectic mix of plants, shrubs and trees, a pond and plenty of open spaces to enjoy sitting in the warm Kentish sun. Other benefits include a detached coach house and garage which has an upper floor too and there are also several other outbuildings, the Coach house has potential to be converted into an annexe or a separate dwelling (permissions required).

Once inside you will find a unique property with loads of natural light in the rooms, there are three reception rooms, a study, dining area and living room, there is also a good-sized fitted family kitchen and shower room downstairs. On the top two floors there are three double bedrooms and a bathroom and several large loft rooms too, the house has so much potential. This house is for sale CHAIN FREE and viewing is HIGHLY RECOMMENDED

Council Tax Band: D

Tenure: Freehold

Tenure

Freehold



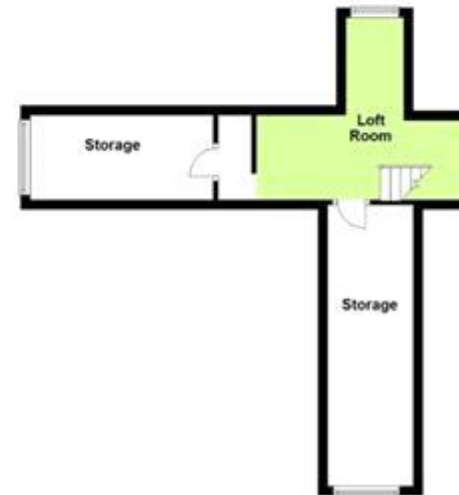
Ground Floor

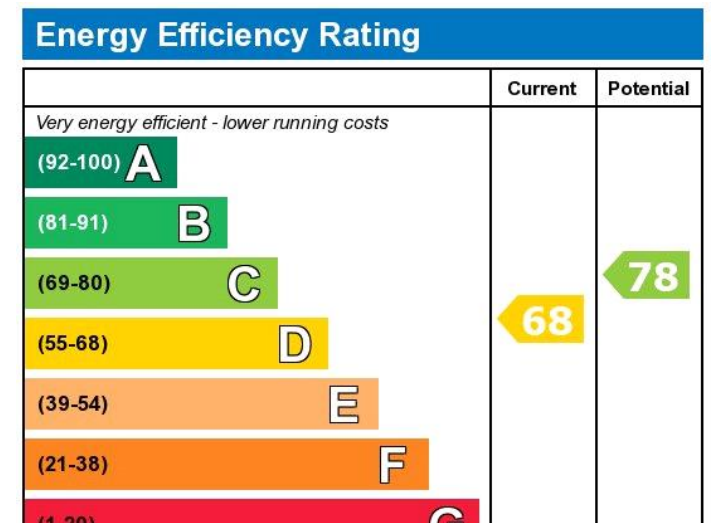


First Floor



Second Floor





Viewing by appointment only
 Oatley & O'Connor Ltd - Head Office
 Oatley & O'Connor, 27 Castle Street, Canterbury, Kent CT1 2PX
 Tel: 01227 903156 Email: james@oatleyandconnor.com Website:
<https://oatleyandconnor.com/>

