



Alexandra Corniche, Hythe

Guide Price £750,000 Freehold

4 bedroom detached house for sale

Description

Ideally located in a select modern development in the seaside town of Hythe in Kent is this Four Bedroom Executive Detached House. This property is simply stunning and has recently been completely re-furbished to a very high standard, there is a high quality modern integrated kitchen, with a full range of appliances, this includes a tower fridge and freezer, dishwasher, double oven, hob & extractor, there is also a fitted washing machine and tumble dryer in the utility room. The kitchen units are of an excellent quality and there are quartz tops and splashbacks too, there is a great sized conservatory which is open plan to this room, making the perfect dining area. The living room is also a great sized and measures over 25 feet, this room has a fireplace and French Doors opening out onto the garden. The ground floor is completed by an office which is perfect for working from home, a ground floor cloakroom and a utility room. Upstairs this fabulous property has four double bedrooms, the master has an en-suite and a lovely balcony with a cracking sea view. There is also a family bathroom, which is finished to the highest standard just like the en-suite and WC. The whole property is neutrally decorated and available with NO CHAIN so perfect for those who need to move quickly. Outside the property has a double detached garage and parking for at least three cars. The Garden is a great size for a modern home, plenty of lawn and a walled surround with a slate tiled patio and white gravel surrounding the home. VIEWING OF THIS STUNNING HOME IS STRONGLY ADVISED.



Tenure: Freehold

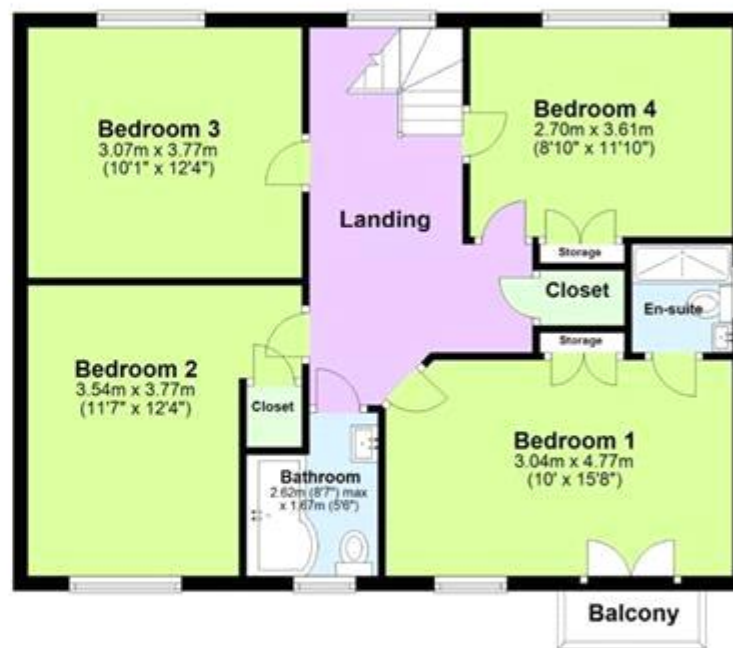
Tenure

Freehold

Ground Floor



First Floor





Energy Efficiency Rating		
	Current	Potential
Very energy efficient - lower running costs		
(92-100) A		
(81-91) B		
(69-80) C	72	83
(55-68) D		
(39-54) E		
(21-38) F		
(1-20) G		

Viewing by appointment only
 Oatley & O'Connor Ltd - Head Office
 Oatley & O'Connor, 27 Castle Street, Canterbury, Kent CT1 2PX
 Tel: 01227 903156 Email: james@oatleyandoconnor.com Website:
<https://oatleyandoconnor.com/>

