



Norfolk Road, Cliftonville, Margate

Guide Price £130,000 Leasehold

2 bedroom apartment for sale

Description

This apartment is set on the top floor of a converted building and has great views from the lounge over the seafront. There are two double bedrooms which are accessible through the hallway as well as a lounge / diner, separate kitchen and modern bathroom. There is also plenty of storage in the property. This apartment all offers an allocated parking space. With views of the seafront means you are within minutes to the beach. With Palm Bay also within walking distance, you can enjoy long summer walks with beautiful views. Palm Bay has tennis courts and even a popular Jet Ski beach where you can hire a jet ski. Alternatively, if you walk the other way you will come to Margate Old Town and the famous Margate sands. Imagine, a warm summer evening walking into Margate and watching the sun set on the Margate Steps.

Council Tax Band: A

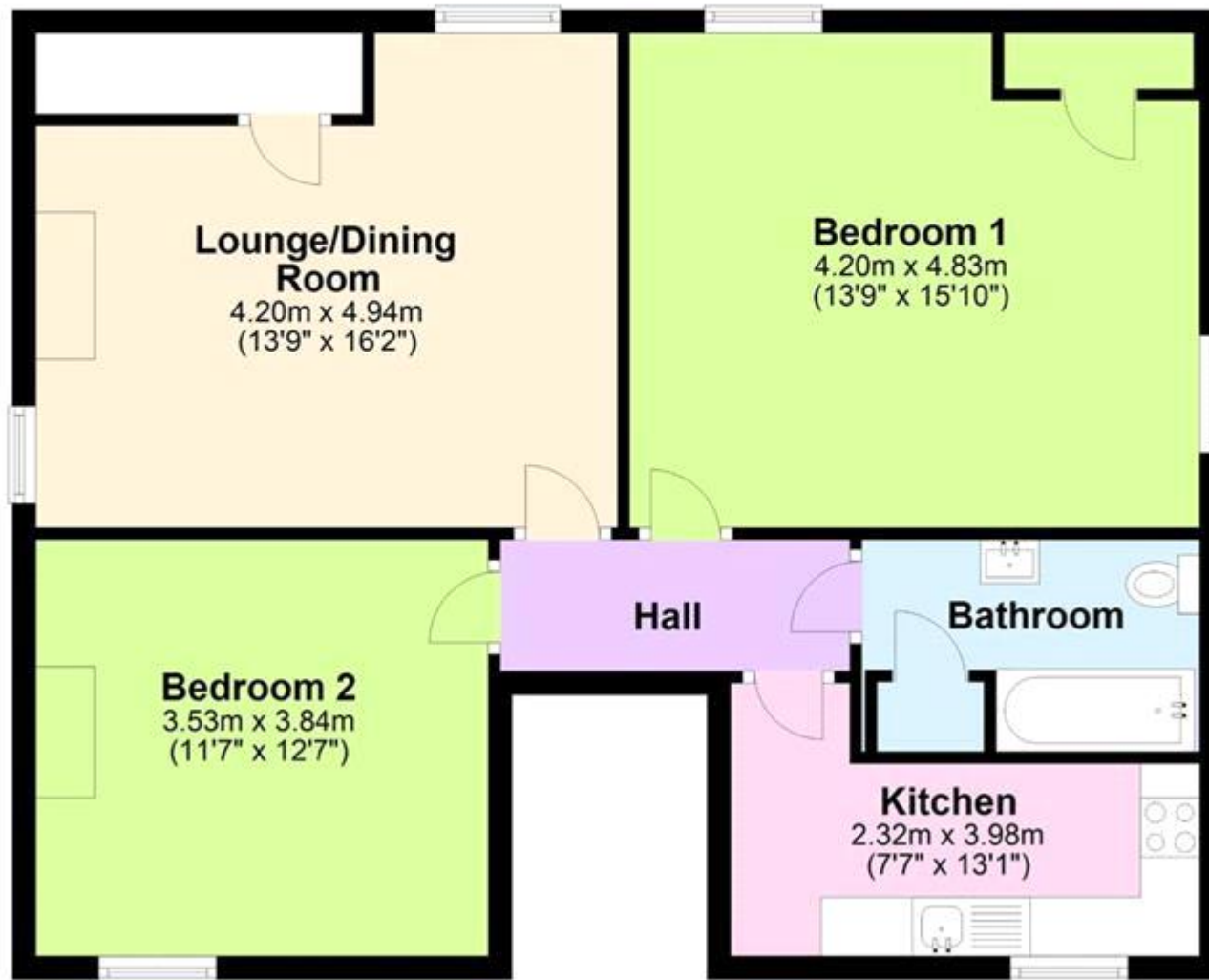
Tenure: Leasehold

Tenure

Leasehold



Ground Floor



Ground Floor



Energy Efficiency Rating

	Current	Potential
<i>Very energy efficient - lower running costs</i>		
(92-100) A		
(81-91) B		
(69-80) C		73
(55-68) D		
(39-54) E	53	
(21-38) F		
(1-20) G		

Viewing by appointment only
 Oatley & O'Connor Ltd - Head Office
 Oatley & O'Connor, 27 Castle Street, Canterbury, Kent CT1 2PX
 Tel: 01227 903156 Email: james@oatleyandoconnor.com Website:
<https://oatleyandoconnor.com/>

