

front - south east

Gore Lane, Eastry, Sandwich

Guide Price £425,000 Freehold

3 bedroom bungalow for sale

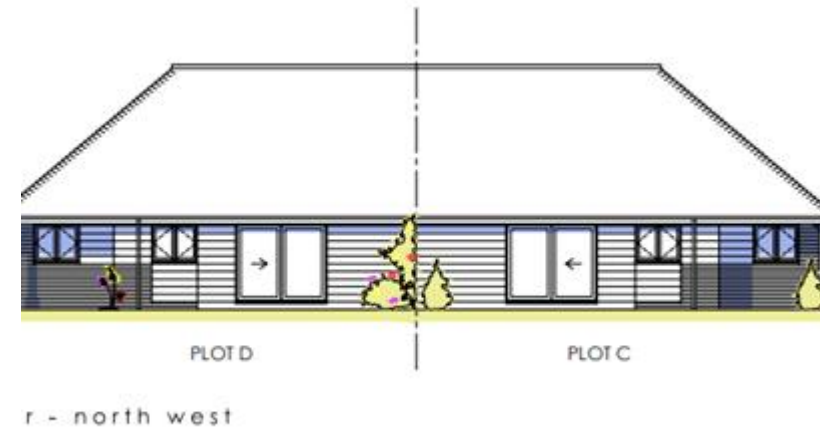
Description

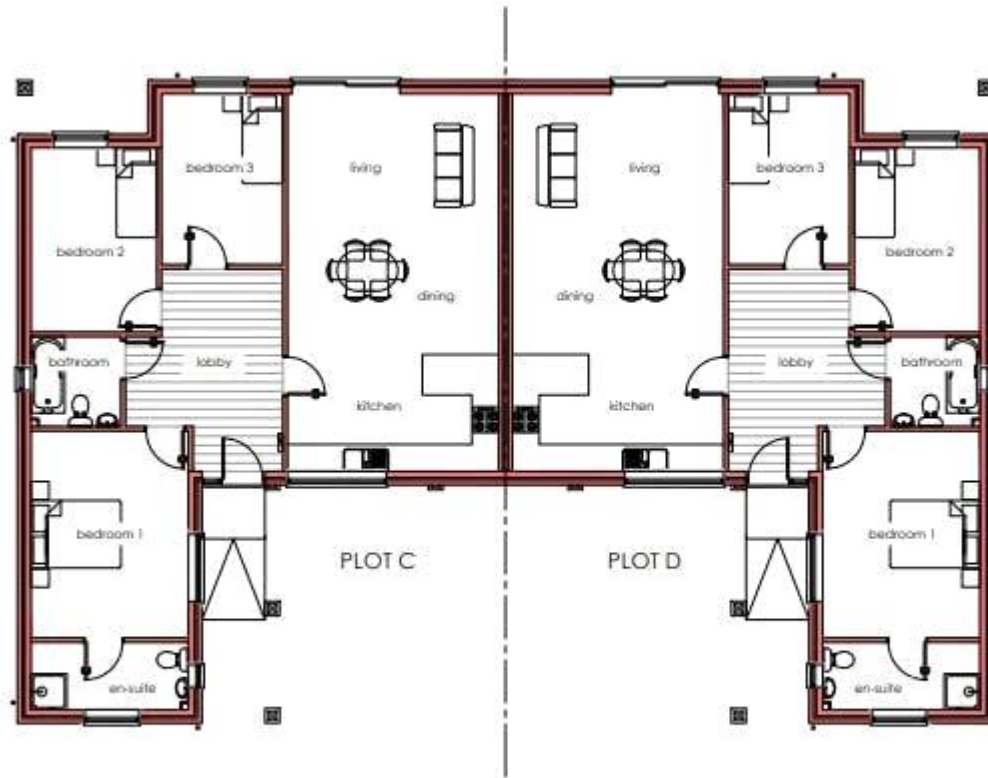
RESERVE NOW OFF PLAN - Three Bedroom Semi-Detached Brand New Bungalow. Ideally situated in the popular Kentish Village of Eastry, within a short walk of the village centre with its post office, shop, local pub, and variety of other facilities, there is a local doctors surgery too and easy access to Sandwich. The bungalow is located in a semi-rural area and is perfect for downsizing couples, there will be plenty of room for the grand children too and it won't be easy to find another bungalow like this, brand new and with an open plan modern feel.

This property will be finished to a high standard and will include, a fully integrated kitchen, with quartz worktops, integrated appliances and a great range of units. There will be underfloor heating in the main living space and both bathrooms too. There are three good sized bedrooms in this property, the master having a good sized En-Suite and there is also a separate family bathroom. The property has a sunny rear garden and off road parking too - contact us for more information - get in quickly so that you are not disappointed.

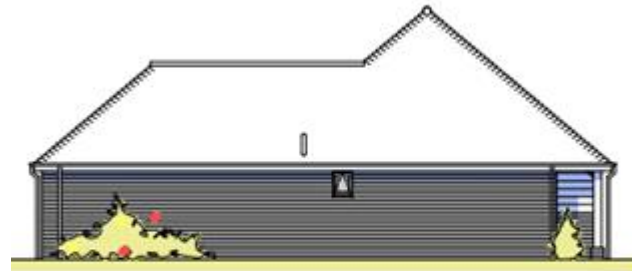
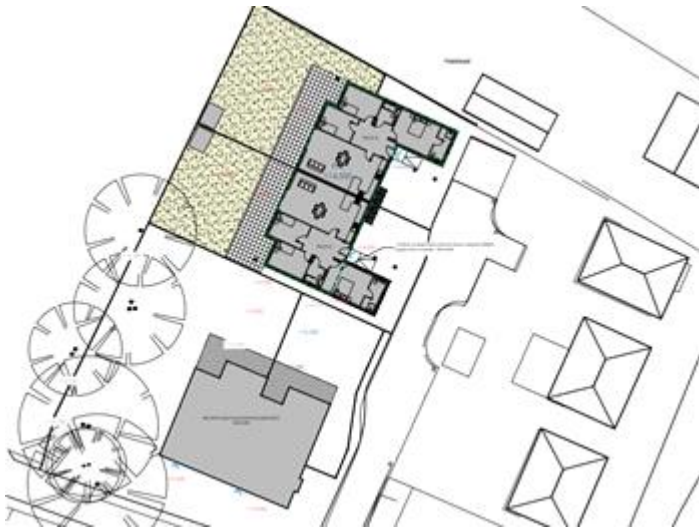
Tenure

Freehold



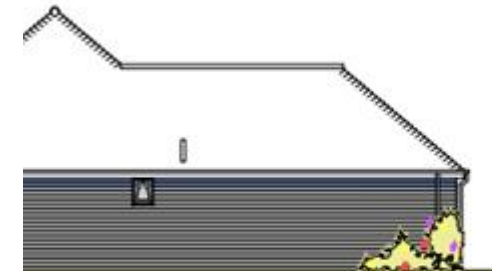


ground



PLOT D

side - north east



PLOT C

west



internc



Viewing by appointment only
Oatley & O'Connor Ltd - Head Office
Oatley & O'Connor, 27 Castle Street, Canterbury, Kent CT1 2PX
Tel: 01227 903156 Email: james@oatleyandoconnor.com Website:
<https://oatleyandoconnor.com/>

