



Dorman Avenue North, Aylesham, Canterbury

Guide Price £350,000 Freehold

5 bedroom terraced house for sale

Description

This Modern Five Bedroom End of Terrace house is ideally located in Aylesham, within a short stroll of the village centre with it's parade of local shops, which includes a Co-op and several food outlets, the primary school is also just across the road too and is very popular with local families. This village is one of very few to have a railway station, this provides easy access to both Canterbury and Dover, and further away if you need to travel for work, the A2 is also within a short easy drive.

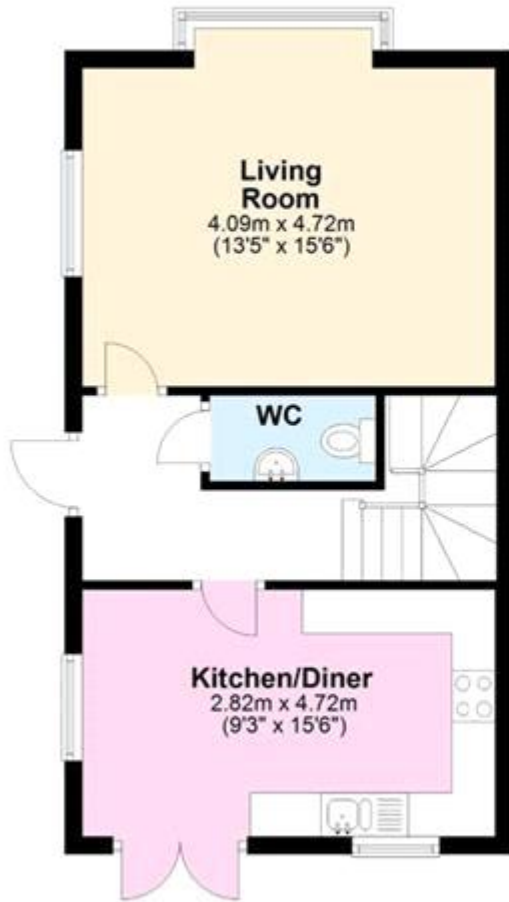
As soon as you pull up outside, you are sure to be impressed, this double fronted property is a great family home. There is a sunny dual aspect living room with a box bay window, a warm and spacious place for a family to relax in front of the television. The modern Kitchen/Diner has a great range of grey fitted units and integrated appliances, there is plenty of space for a family to enjoy a sit down meal in comfort. The next floor provides two large double bedrooms, both of which are dual aspect and sunny and bright, the master has an en-suite with a large walk in shower cubicle and is presented in great condition. The top floor has three further bedrooms, all of which are a good size and a modern family bathroom. This property is a fantastic family home, the sunny rear garden has been well landscaped by the current owners, there is a patio and lawn, a large garden shed and a paved sitting area for sitting out in the warm Kentish sun. There is a gate to the rear which provides access to the car barn and parking area. VIEWING ADVISED



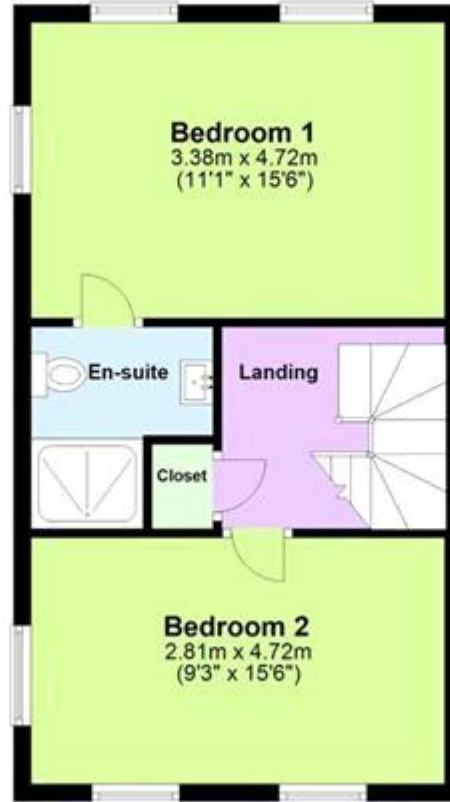
Tenure

Freehold

Ground Floor



First Floor



Second Floor





Energy Efficiency Rating		
	Current	Potential
Very energy efficient - lower running costs		
(92-100) A		93
(81-91) B	84	
(69-80) C		
(55-68) D		
(39-54) E		
(21-38) F		
(1-20) G		

Viewing by appointment only
 Oatley & O'Connor Ltd - Head Office
 Oatley & O'Connor, 27 Castle Street, Canterbury, Kent CT1 2PX
 Tel: 01227 903156 Email: james@oatleyandoconnor.com Website:
<https://oatleyandoconnor.com/>

